

Blast Chillers-Freezers CW

Blast Chiller-Freezer Crosswise - 19,5/15 kg (R452a) with Schuko plug

ITEM # _____

MODEL # _____

NAME # _____

SIS # _____

AIA # _____


727829 (RBF061P)

 Blast Chiller & Freezer
 19,5/15kg with Schuko plug,
 compatible with 6x1/1 GN
 crosswise Oven - R452A

Short Form Specification

Item No. _____

- Blast chiller/freezer with digital temperature and time display
 - For 6 GN 1/1 or 5 600x400 mm trays. Load capacity: chilling 19,5 kg; freezing 15,2 kg (UK guidelines). Main components in 304 AISI stainless steel. Internal rounded corners and drain. Built-in refrigeration unit. Automatic detection of food probe insertion. Automatic and Manual defrost. Blast chilling real residual time estimation (A.R.T.E.). Turbo cooling function. Specific cycles for ice cream. Evaporator with antirust protection. Digital temperature and time display. HACCP and Service alarms with data logging. Operating air temperature: +3 -41°C. For ambient temperatures up to 40°C. Cyclopentane insulation (HCFC, CFC and HFC free). R452a refrigerant gas (HCFC and CFC free).

Main Features

- Blast Chilling cycle: 19,5 kg from 90°C up to 3°C in less than 90 mins.
- Blast Freezing cycle: 15 kg from 90°C up to -18°C in less than 240 min.
- Soft Chilling (air temperature -2°C).
- Freezing (air temperature -36°C)
- Hard Chilling (air temperature -20°C).
- Holding at +3 °C for chilling or -36 °C for freezing, automatically activated at the end of each cycle, to save energy and maintain the target temperature (manual activation is also possible).
- Turbo cooling: chiller works continuously at the desired temperature; ideal for continuous production.
- Control unit provides two large displays to read out: time, core temperature, cycle countdown, alarms, service information.
- Two customizable cycles (P1 & P2) for each operating mode, allowing to set the time and air temperature. These programs can be converted into ice-cream specialized cycles (shape maintenance and holding).
- All information related to the different operating models are recorded: date, time, cycle, core temperature, holding temperature, HACCP accordance.
- Single sensor core probe as standard.
- Remaining time estimation for probe-driven cycles based on artificial intelligence techniques (ARTE) for an easier planning of the activities.
- Performance guaranteed at ambient temperatures of +40°C.
- Connectivity ready for real time access to connected appliances from remote and data monitoring (requires optional accessory - contact the Company for more details).

Construction

- High density polyurethane insulation, 60 mm thickness, HCFC free.
- Magnetic, easy-to-remove heated gaskets.
- 304 AISI stainless steel construction throughout.
- Seamless hygienic inner cell with all rounded corners for easy cleaning.
- Swing hinged front panel for easy service access to main components.
- Ventilator swinging hinged panel for access to the evaporator for cleaning.
- No water connections required.
- Waste water can be plumbed into drain, but can also be collected in an optional waste container.
- Environmentally friendly: R452a as refrigerant gas.

APPROVAL: _____

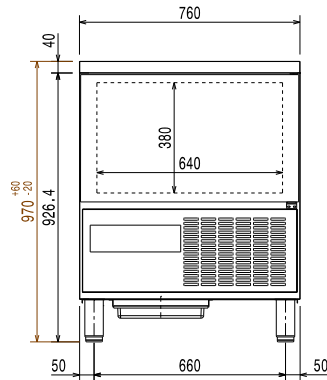
Included Accessories

- 1 of 1 single-sensor probe for blast chiller and blast chiller&freezers PNC 880213

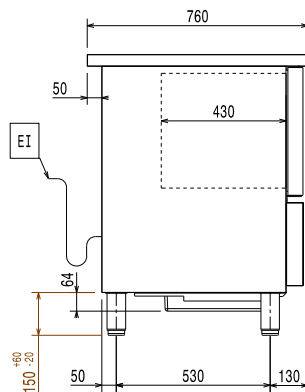
Optional Accessories

- Connectivity kit for AOC/EasyLine and CW Blast Chillers/Blast Chiller Freezers (ECAP) PNC 880183
- 1 single-sensor probe for blast chiller and blast chiller&freezers PNC 880213
- Rilsan grid 600x400mm PNC 880864
- Kit wheels for 15kg blast chiller&freezers PNC 881052
- Plastic coated grid, 1/1GN PNC 881061
- 4 wheels for blast chillers and blast chiller/freezers PNC 881097
- Stacking kit for 6 GN 1/1 convection oven on 15&25 kg blast chiller/freezer crosswise PNC 881528
- Pair of 1/1GN AISI 304 stainless steel grids PNC 921101
- KIT HACCP EKIS PNC 922166
- Ethernet connector for ECAP protocol appliances PNC 922768

Front

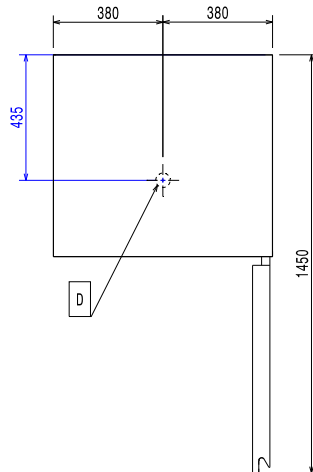


Side



EI = Electrical inlet (power)

Top



Electric

Supply voltage:

727829 (RBF061P) 220-240 V/1 ph/50 Hz

Electrical power max.:

1.58 kW

Circuit breaker required

Installation:

Clearance:

5 cm on sides and back.

Please see and follow detailed installation instructions provided with the unit

Capacity:

GN: 6 - 1/1 containers

Key Information:

External dimensions, Width: 760 mm

External dimensions, Depth: 760 mm

External dimensions, Height: 970 mm

Net weight: 105 kg

Shipping weight: 115 kg

 Shipping volume: 0.79 m³

Refrigeration Data

Refrigeration power at

evaporation temperature: -10 °C

Product Information (EN17032 – Commission Regulation EU 2015/1095)

Chilling Cycle Time (+65°C to +10°C):

109 min

Full load capacity (chilling):

30 kg

Freezing Cycle Time (+65°C to -18°C):

259 min

Full load capacity (freezing):

15 kg

Sustainability

Refrigerant type: R452A

GWP Index: 2141

Refrigeration power: 2210 W

Refrigerant weight: 850 g

Energy consumption, cycle (chilling):

0.0991 kWh/kg

Energy consumption, cycle (freezing):

0.3553 kWh/kg